



# ProMA Series

Multi-Biometric Outdoor Access Control  
with Integrated Video Intercom



Facial  
Authentication



Fingerprint  
Authentication



RFID



Palm  
Authentication  
(Optional)



QR code  
(dynamic / static)



TCP/IP



IP66



IK07



SIP Protocol  
(Ver. 2.0)

Compatible with



Compatible with





## Product Overview

**ProMA series** is an advanced standalone terminal that unifies multi-biometric authentication, RFID, and integrated video intercom into one rugged device. Its aluminum alloy chassis achieves IP67 waterproof and dustproof, and reaches IK07 vandal resistance, delivering dependable security in all-weather environments.

Three models for Every Security Need:

- ProMA: facial authentication + fingerprint + RFID + palm (optional).
- ProMA-RF: facial authentication + RFID + palm (optional).
- ProMA-QR: facial authentication + QR code (dynamic/ static) + RFID + palm (optional).

ProMA series authenticates users in under 0.35 seconds and supports up to 30,000 facial templates, 50,000 RFID credentials, and expandable biometric template storage (facial templates: up to 50,000 ; fingerprint template: 10,000). Optional palm authentication adds up to 5,000 templates, ensuring rapid throughput during peak traffic.

What sets ProMA series apart is its dual camera 2MP WDR imaging delivers superior facial authentication in backlighting and lowlight conditions. Its ONVIF and SIP protocol compatibility enables seamless video intercom, realtime visitor screening, and remote door release in a single device. Also, ZKTeco PUSH integration connects to ZKBio CVSecurity for centralized security management.

ProMA series eliminates the need for multiple hardware units and reduces installation complexity for your access control infrastructure across corporate buildings, campuses, logistics hubs, and residential communities.

## Core Capabilities



### High Durability and Operates in All-Weather Conditions

High-strength aluminum alloy casing with IK07 vandal resistance, IP67 waterproof and dustproof rating.



### Data Security

Deploys the AES 256-bit algorithm encryption to protect data storage. The ProMA series also secures communication between the server and the web client through HTTPS / TLS1.2 encryption.



### Unified Access and Attendance Integration

Integrate with ZKTeco's ZKBio CVSecurity for access control and security management. Dual PUSH integration: ZKBio CVAccess (Access Control) via AC PUSH or ZKBio Time (Time & Attendance) via TA PUSH—user-selectable deployment mode.



### Supports Video Intercom

Video Intercom (SIP Protocol Ver. 2.0) Indoor Monitor: VT07-B22L, VT07-B26L-W

Software: ZKBio CVSecurity, BioTalk Pro.

Supports ONVIF (Compatible with Profile S/T/G/C/Q/A) to integrate with third-party network video recorder (NVR).



### Embedded Web Server for Centralized Configuration

Manage ProMA series configuration via embedded web server, providing a centralized device configuration with no software installation required. Configure network settings, cloud services, video intercom setup and mobile credential (only for ProMA-QR) through the intuitive web-based dashboard.



### Multiple Biometric Authentication Methods

Multiple biometric authentication methods: Facial authentication, Fingerprint authentication, Palm authentication (optional), QR Code (dynamic/static) and RFID.

Compatible with multiple RFID reader modules supporting up to 100 + card types, including:

-125 kHz: ID / HID Prox / HID iclass.

-13.56 MHz: IC/DESFire EV1 / EV2, HID iClass, LEGIC.

Supports dynamic and static QR code as secure mobile credentials via ZKBio CVSecurity App for contactless authentication.

## Specifications

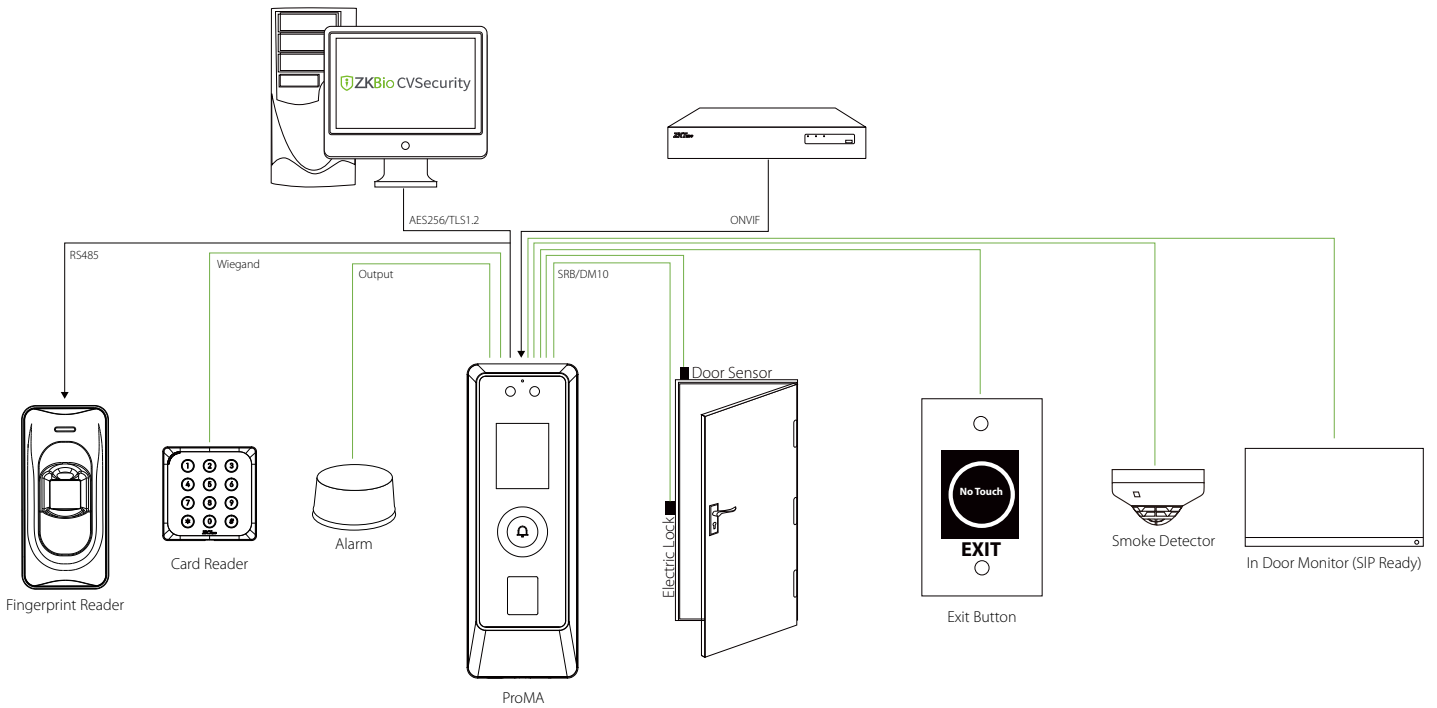
Model	ProMA	ProMA-RF	ProMA-QR
Display	2.0" @ Color LCD Screen (240 × 320)		
Camera	Binocular Camera @ 2MP WDR		
Operation System	Linux		
Hardware	CPU: Quad Core A55 @1.2GHz RAM: 1GB; ROM: 8GB Supplement Light: Yes Virtual Keypad: N/A Fingerprint Sensor: Z-ID	CPU: Quad Core A55 @1.2GHz RAM: 1GB; ROM: 8GB Supplement Light: Yes Virtual Keypad: N/A	CPU: Quad Core A55 @1.2GHz RAM: 1GB; ROM: 8GB Supplement Light: Yes Virtual Keypad: N/A
Authentication Method	Fingerprint / Face / Card / Palm (Optional)	Face / Card / Palm (Optional)	Face / Card / QR Code (Dynamic / Static) / Palm (Optional)
Fingerprint Template Capacity	10,000 (1:N) 50,000 (1:N) (Optional)	N/A	N/A
Face Template Capacity	30,000 (1:N) 50,000 (1:N)(Optional)		
Palm Template Capacity	5,000 (1:N)(Optional)		
Card Capacity	50,000 (1:N)		
User Capacity	50,000 (1:N)		
Transaction Capacity	500000		
Max. User Password Length	8 Digits		

Biometric Authentication Speed	less than 0.5 sec (Fingerprint) less than 0.35 sec (Facial Authentication) less than 0.35 sec (Palm Authentication)	less than 0.35 sec (Facial Authentication) less than 0.35 sec (Palm Authentication)	less than 0.35 sec (Facial Authentication) less than 0.35 sec (Palm Authentication)
Touchless Biometric Authentication Distance	30cm to 170cm (Facial Authentication) 15cm to 45cm (Palm Authentication)		
False Acceptance Rate (FAR) %	≤0.01% (Facial Authentication) ≤0.0001% (Fingerprint) ≤ 0.01% (Palm)	≤0.01% (Facial Authentication) ≤ 0.01% (Palm)	
False Rejection Rate (FRR) %	≤0.02% (Facial Authentication) 0.01% (Fingerprint) ≤ 0.17% (Palm)	≤0.02% (Facial Authentication) ≤ 0.17% (Palm)	
Biometric Algorithm	ZKFace V3.6 ZKFingerprint V13.0 (Default)/ V10.0 ZKPalmVein VX20.1	ZKFace V3.6 ZKPalmVein VX20.1	ZKFace V3.6 ZKPalmVein VX20.1
Card Type	ID & IC DESFire EV1/EV2 @ 125 kHz & 13.56 MHz (Dual Frequency) (Standard) Multi-Tech Module (Optional): Module 1: ID & IC & DESFire EV1/EV2 & FeliCa & HID Prox (125 kHz & 13.56 MHz Mutil-Frequency) (Optional) Module 2: ID & IC & DESFire EV1/EV2 & FeliCa & HID Prox & HID iClass (125 kHz & 13.56 MHz Mutil-Frequency) (Optional)		
QR Code	N/A	N/A	Dynamic QR code authentication via ZKBio CVSecurity mobile app. (Compatible with QR600 reader)
Communication	TCP/IP*1 Wiegand (Input & Output)*1 RS485: ZKTeco RS485*1 Aux Inputs *1, Aux Outputs *1, Electric Lock*1, Door Sensor*1, Exit Button*1, Alarm*1		
Standard Functions	Webserver, DoorBell, ADMS, DST, Up to 14-digit User ID, Access Levels, Groups, Holidays, Anti-Passback, Record Query, Tamper Switch Alarm, Multiple Verification Methods, DM10, AC Push and TA Push Protocol Switch, Photo ID (up to 1,000 personnel photo capacity), HTTPS / SSH Backend Access, SIP Protocol Video Intercom (Version 2.0), ONVIF Protocol (Compatible with Profile S ,Profile T ,Profile G, Profile C, Profile Q, Profile A)		
Optional Functions	RFID module 1 and module 2 (switchable); Expandable biometric capacity: Palm(5,000); Fingerprint (50,000); Face Template (50,000); RFID (50,000)		
Video Intercom	ZKTeco Private Protocol (TCP/IP) over Ethernet LAN; ONVIF compatible for NVR integration Support Devices: Standalone Terminal: ProMA Series(Only ZAM230 Platform) Indoor Monitor: VT07-B01, VT07-B01-W (recommended)		
	(via Standard SIP Protocol Ver2.0) Support Devices: Standalone Terminal: ProMA Series(Only ZAM230 Platform) Indoor Monitor: VT07-B22L, VT07-B26L-W (recommended) Software: ZKBio CVSecurity, BioTalk Pro Mobile App: ZKBio Zexus		
Access Control Interface	RS485 (DM10 Controller 1 Door Expansion / RS485 Card Reader / Biometric Reader)		
Power Supply	DC 12V 3A		
Operating Temperature	-26°C to 55°C (14.8°F to 131°F)		
Operating Humidity	10% to 90% RH (Non-condensing)		
Dimensions	194.7mm*68.7mm*28.3mm (L*W*H)		
Gross Weight	1.56 Kg		
Net Weight	0.45 Kg		
Supported Software	On-Premise Software: ZKBio CVSecurity (AC Push) & ZKBio Time (TA Push)		

Ingress Protection Rating	IP67 Water proof & dust proof IK07 Vandal Resistant		
Installation	Wall-mount (Compatible with Asian Gang-box / Single Gang-Box)		
Hosuing Material	Aluminium Alloy		
Certifications	ISO 14001, ISO 9001, CE, FCC, RoHS		
Factory ID	AC01-PF08H-47	AC01-PF07H-47	AC01-PF06H-47

Note: Palm authentication is for indoor use only

Configuration



Dimensions (mm)

