

Megapixel IP Camera with 4CH NVR Kit

Version: V1.1

Date: July 2014

The logo for ZKTeco, featuring the letters 'ZKT' in a large, bold, italicized font, followed by 'eco' in a smaller, lowercase, italicized font. A registered trademark symbol (®) is positioned to the upper right of the 'o' in 'eco'. The logo is white and set against a green arrow-shaped background pointing to the left.

Advanced Biometric and RFID Solutions

About This Manual

All functions depend on the actual product. Since the product is subject to updating, our company is not responsible for any difference from this guide and not liable for any dispute over different technical parameters from this guide. The project is subject to any change without notice.



Important Claim

Firstly, thank you for purchasing this terminal, before use, please read this manual carefully to avoid the unnecessary damage! The company reminds you that the proper user will improve the use affect and authentication speed.

No written consent by our company, any unit or individual isn't allowed to excerpt, copy the content of this manual in part or in full, also spread in any form.

The product described in the manual maybe includes the software which copyrights are shared by the licensors including our company, Except for the permission of the relevant holder, any person can't copy, distribute, revise, modify, extract, decompile, disassemble, decrypt, reverse engineering, leasing, transfer, sub-license the software, other acts of copyright infringement, but the limitations applied to the law is excluded.



Due to the constant renewal of products, the company cannot undertake the actual product in consistence with the information in the document, also any dispute caused by the difference between the actual technical parameters and the information in this document. Please forgive any change without notice.

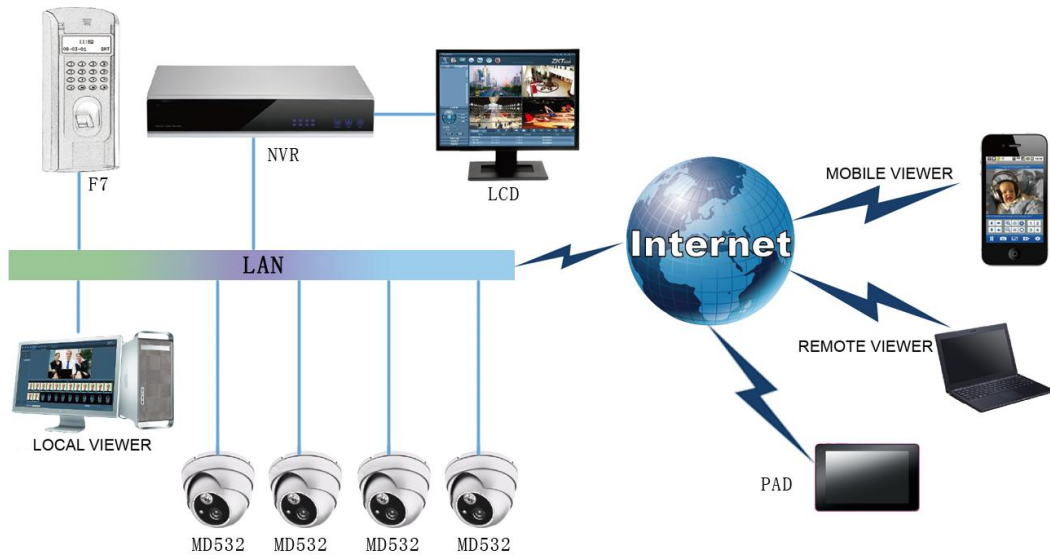


Contents

1. Device Installation and Cable Connection for Internet Access	1
1.1 Networking of IPC Suite	1
1.2 Device Installation	1
1.3 Cable Connection for Internet Access	1
1.3.1 Connecting the MD532 to the Internet	2
1.3.2 Connecting the Access Device to the Internet	2
1.3.3 Connecting the NVR to the Internet	3
2. Device Access	4
2.1 Using the Software of the NVR	4
2.2 Using the Network Video Surveillance Software	4
2.2.1 Adding a Device to the Surveillance Client Software	5
2.2.2 Setting for Linkage between Access Control and Video	10

1. Device Installation and Cable Connection for Internet Access

1.1 Networking of IPC Suite



1.2 Device Installation

😊 Notes:

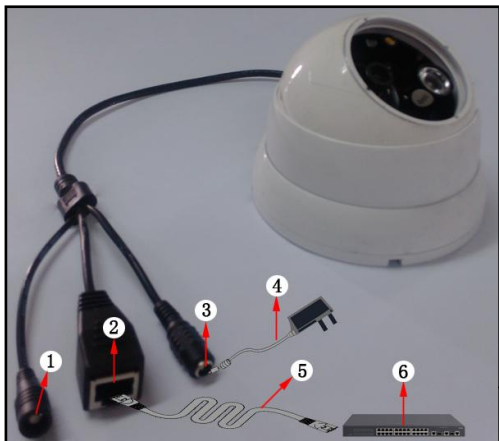
- (1) For the installation method of MD532, see the *IR5+MD5+IP5-IP Camera User Manual*.
- (2) For the installation method of F7, see the *F7 Installation Guide and User Manual*.
- (3) For the installation method of NVR, see the *NVR User Manual*.

1.3 Cable Connection for Internet Access

Install the devices, power them on, and then connect the NVR device, four MD532 devices, and the F7 device to the Internet by using network cables.

😊 Note: For detailed description of cable connection, see the corresponding user manuals of the devices.

1.3.1 Connecting the MD532 to the Internet

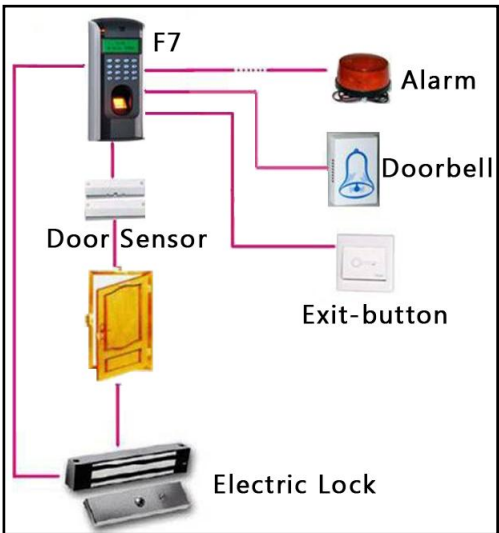


I . Connect the power cables and power on the MD532.
 II . Connect the MD532 to the switch by using network cables for Internet access.

1. Reset Key	2. Network Interface	3. Power Interface
4. DV 12V	5. Network Cable	6. Switch

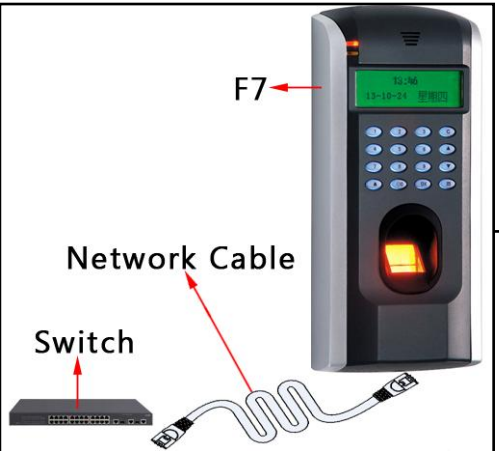
1.3.2 Connecting the Access Device to the Internet

(The following takes F7 as an example.)



I . Install the access control device (F7) and power on it.

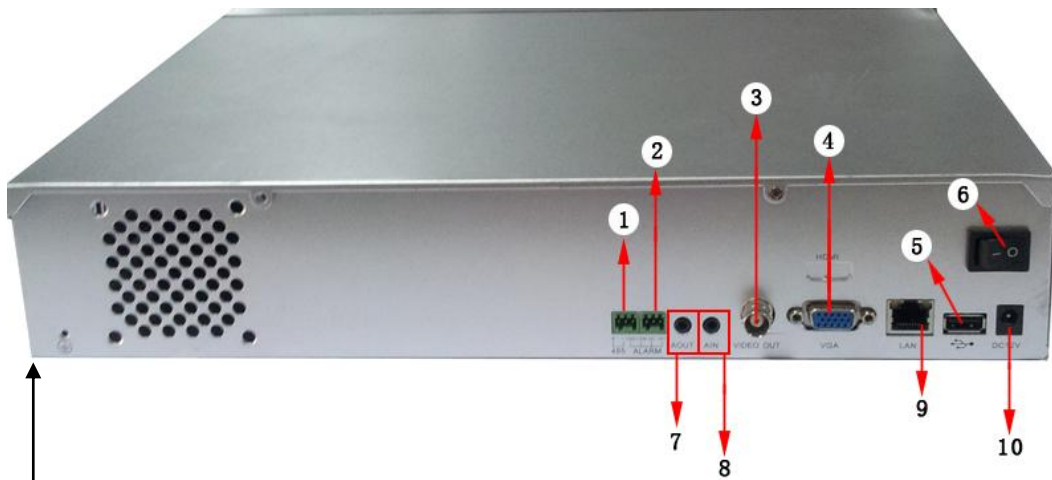
Notes:
(1) Installation of access control device is required only if the suite contains an access control device.
(2) For the suite of standard configuration, the F7 access control all-in-one device is used. However, the following access control products are also supported: F8, F18, MA300, TF1700 and F9.



II . Connect the F7 to the switch by using network cables for Internet access.

1.3.3 Connecting the NVR to the Internet

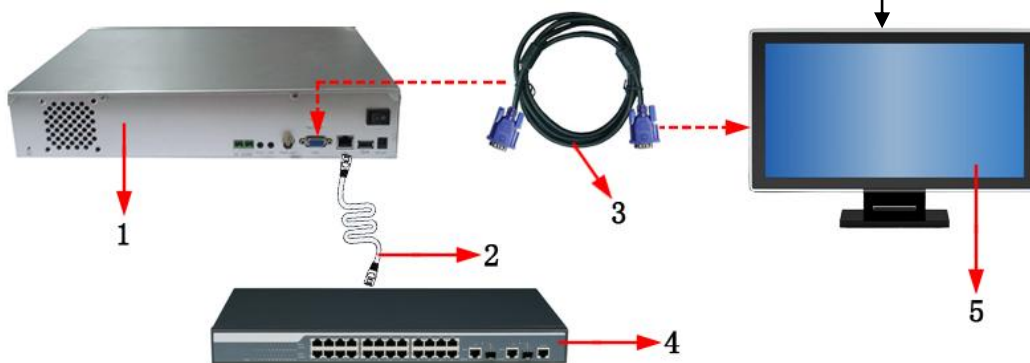
- NVR cable connection ports



1. 485 Interface	4. VGA Video Output Interface	6. Power Button	9. Network Interface
2. Alarm Interface	5. USB Interface	7. Audio Output	10. Power Interface
3. CBVS Video Output Interface	8. Audio Input		

- I. Use the CBVS or VGA video output mode, and connect the display device by using corresponding connection cables.
- II. Connect the power cables and power on the NVR
- III. Connect the NVR to the switch by using network cables for Internet access.

- NVR networking



1. NVR	2. Network Cable	3. VGA Cable	4. Switch	5. LCD
--------	------------------	--------------	-----------	--------

2. Device Access

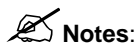
2.1 Using the Software of the NVR

1. Startup

Connect the power cables and press the power button (in the ON state). The power indicator is lit, and the NVR starts. The multi-screen video output mode is enabled by default. If the startup time is within the scheduled record time, the system automatically enables the scheduled recording function and operates properly.

2. Login to the system

After successful startup, right-click the mouse and choose and click **Main Menu** in the shortcut menu. The **SYSTEM LOGIN** dialog box will display. Enter the user name and password in the corresponding input boxes.



- (1) Two default users are available in the system: user **admin** and user **guest**. The default password of the two users is **123456**.
- (2) A password security policy is executed. You can try a password only five times within 30 minutes. After that, the account is locked.

3. Device configuration

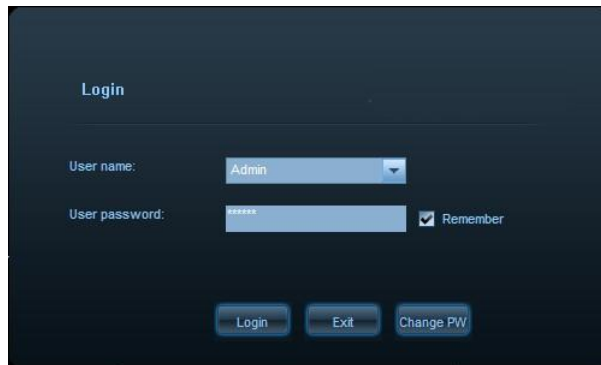
- (1) Choose **Main menu > Advanced > Digital Channel** to access the **Digital Channel** window.
- (2) Choose a channel No. besides **Channel**, and double-click the default configuration in **Config List** to access the **Remote Channel Config** window.
- (3) Click **Device search**. The system automatically searches the devices in the same network segment as the NVR had already connected to the Internet.
- (4) Click to select a device in the Device List area, and then click the **Save** button to return to the **Remote Channel Config** window in which relevant information about this device will display.
- (5) Click the **Save** button to return to the **Digital Channel** window, enable the **Enable** (■ indicates that this function is enabled), and then click the **Save** button in the **Digital Channel** window.
- (6) Right-click the mouse to return to the monitoring window in which monitoring pictures of the devices configured are displayed in real time.

2.2 Using the Network Video Surveillance Software

The bundled optical disk contains the Surveillance Client Software provided by the company for free, implementing simultaneous management and real-time monitoring over multiple IP cameras. Please install the software in the bundled optical disk, start the software, and add devices to the system for real-time monitoring. For details about how to use the network video surveillance software, see the **ZKiVision Client Software User Manual** in the bundled optical disk.

2.2.1 Adding a Device to the ZKiVision Client Software

Start and log in to the Surveillance Client Software (the default login account and password are respectively **admin** and **123456**).

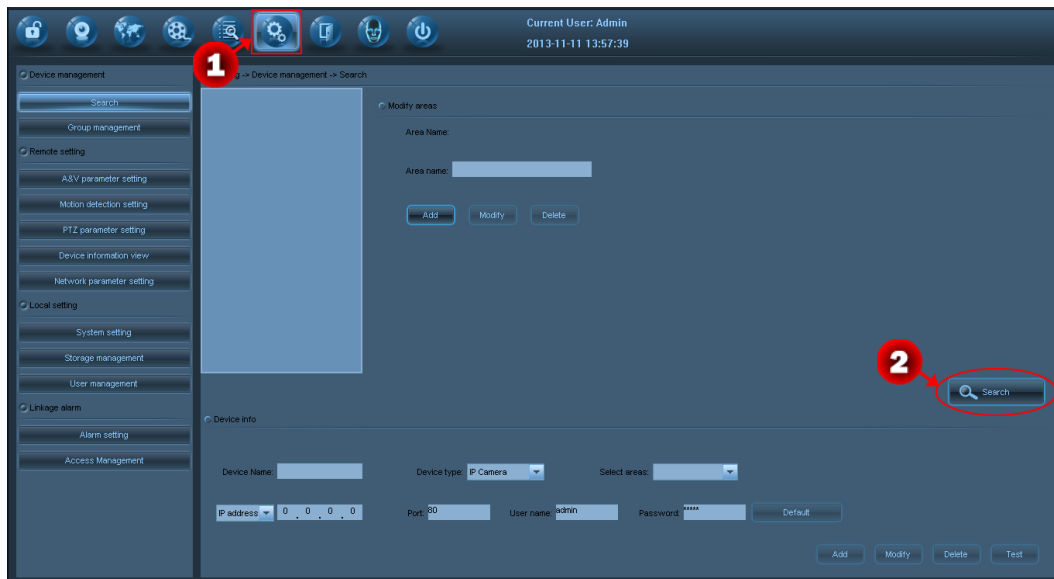




After adding the NVR, MD532, and F7 devices to the Surveillance Client Software and setting the access control function, users can use the Surveillance Client Software to implement linkage between video and access control.

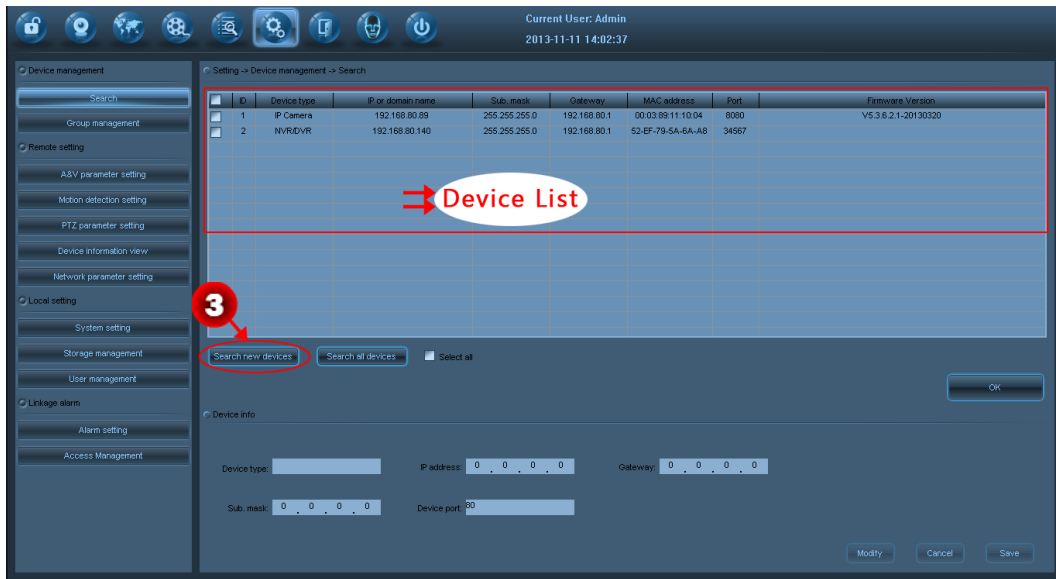
2.2.1.1 Adding NVR and MD532

(This document takes the method of adding the NVR as an example. The method of adding the MD532 is the same as that of adding the NVR.)

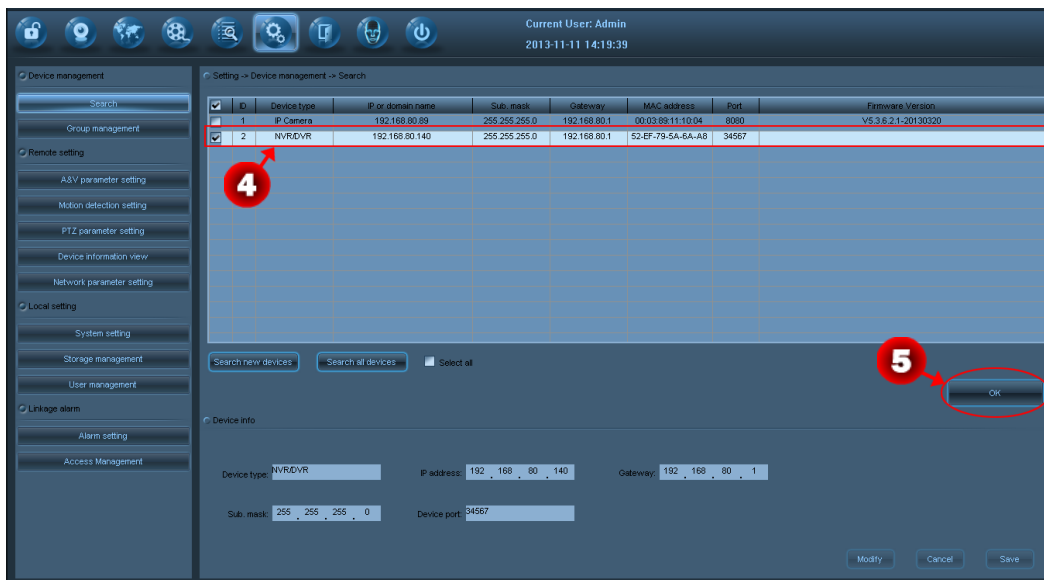
1. Click the **Settings** icon  to access the device **Search** window.



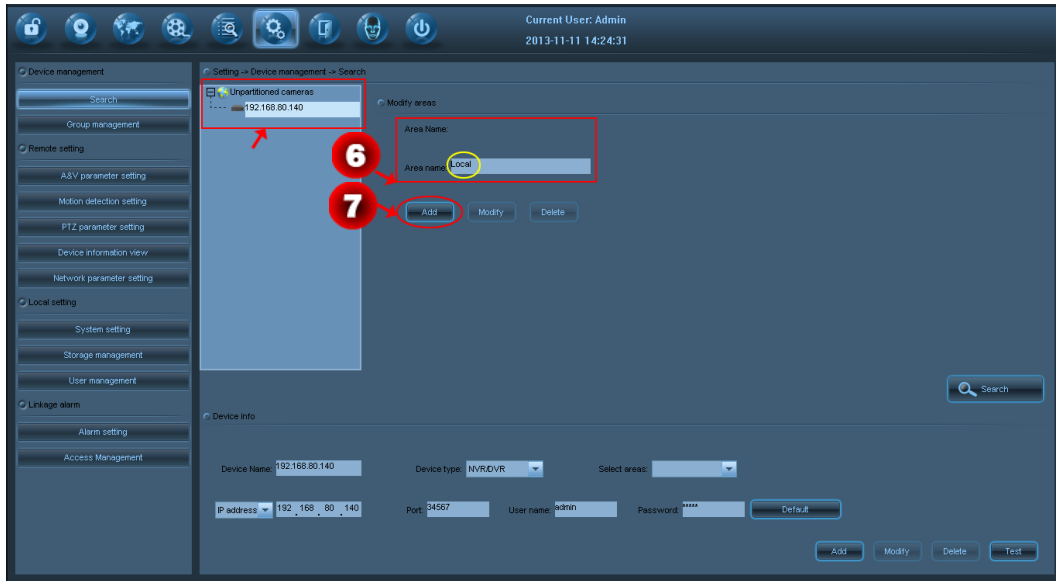
2. Click  and then  to search all NVR and MD532 devices that are connected to the Internet but not added to this software, as shown in the following figure.



3. In the **Device List** area, select the device to be added to this software. The following figure provides an example of adding the NVR device to the software.



4. Click **OK** to access the **Device Information Setting** window.

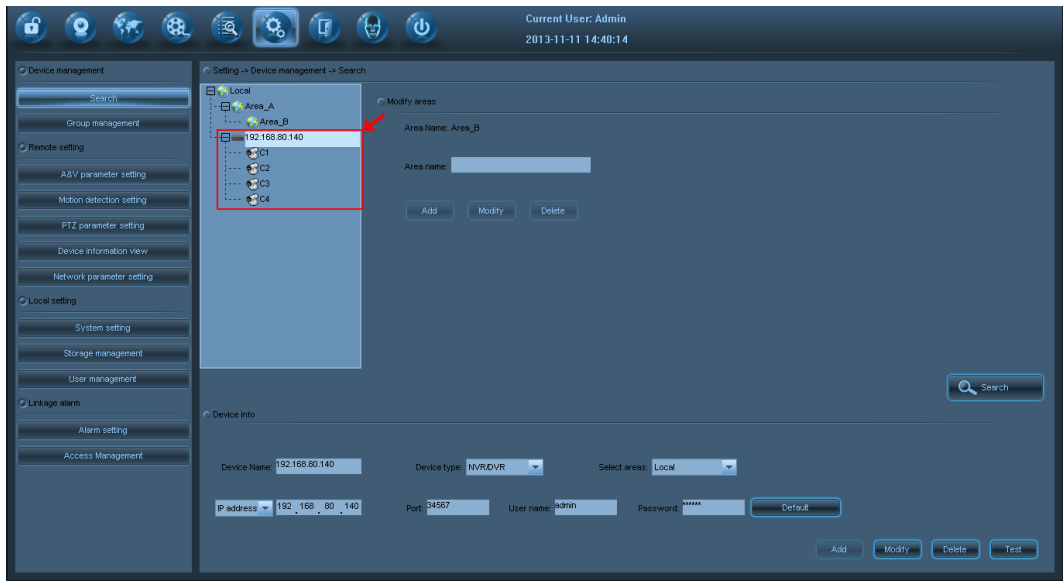


5. The **Unpartitioned cameras** area displays the device selected in **Step 3**.
6. No area is added to the software if the software is used for the first time. You can enter an area name besides **Area name** and click **Add** to add an area for the software. (For example, enter **Local** besides **Area name** and click **Add** to add an area, as shown in the preceding figure.)
7. Click to select the device in the **Unpartitioned cameras** area, and modify device information as required. Click the button besides **Select areas**, and select an area in the drop-down list. After that, click the **Test** button. If the device connection is successful, the **Connection succeeded** prompt will display, as shown in the following figure.



Note: Password in the **Device Info**. area indicates the device connection password. If this password is incorrect, the device cannot be successfully connected.

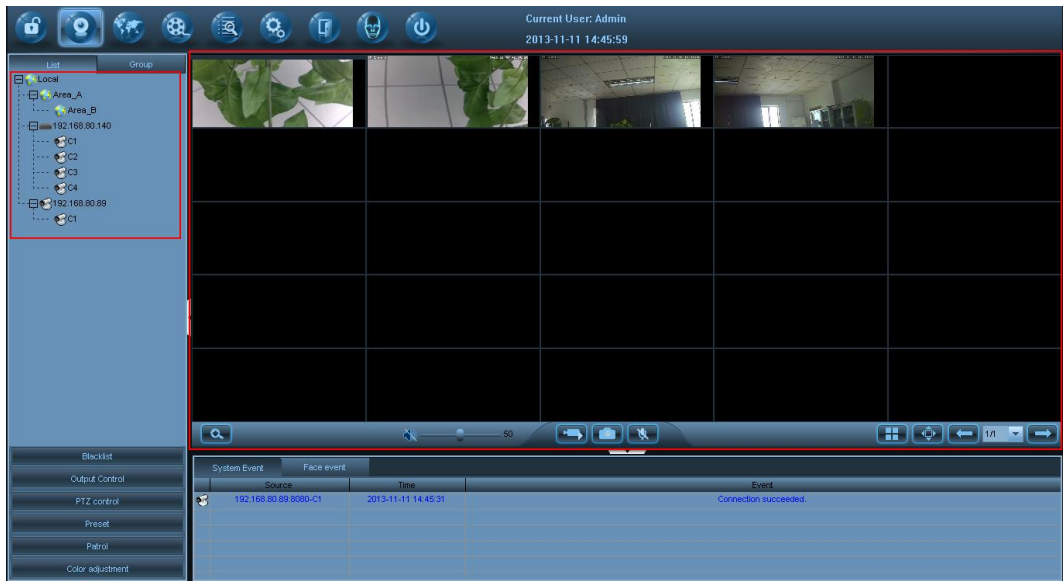
8. Click **OK** to close the prompt. Click **Add** to add the NVR device. After the NVR device is successfully added, it will display in the **Video Device List**, as shown in the following figure.



😊 **Note:** Keep on adding MD532 devices to this system according to **Steps 1-8**. After adding all devices to be added,



click the **Preview** icon, the list of devices already added to the software will display on the left of the window, and the real-time monitoring pictures of the IP cameras (MD532) already added to the software are displayed in the preview window, as shown in the following figure.

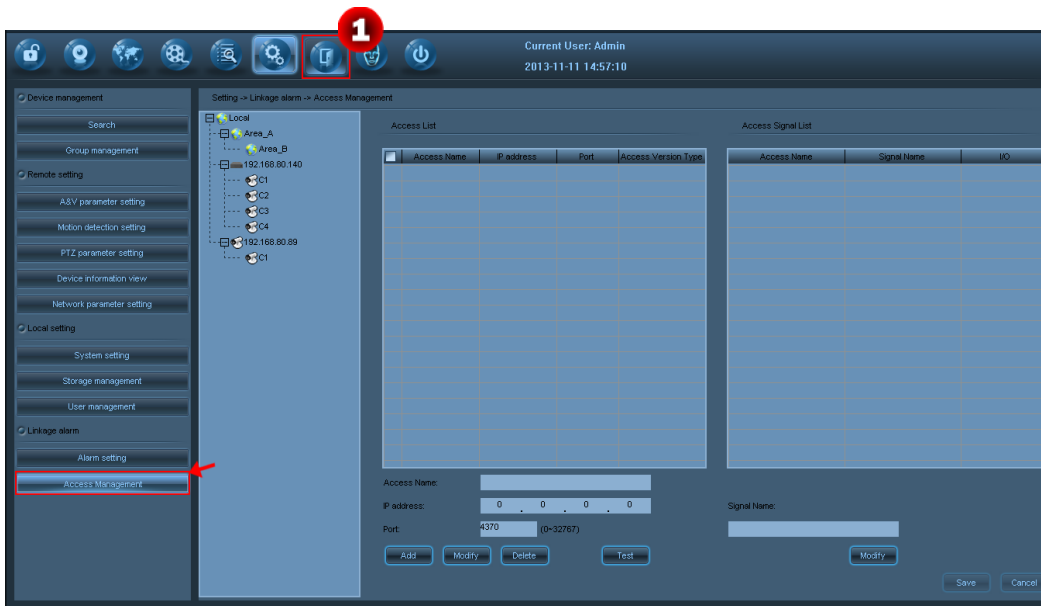


2.2.1.2 Adding Access Control Device

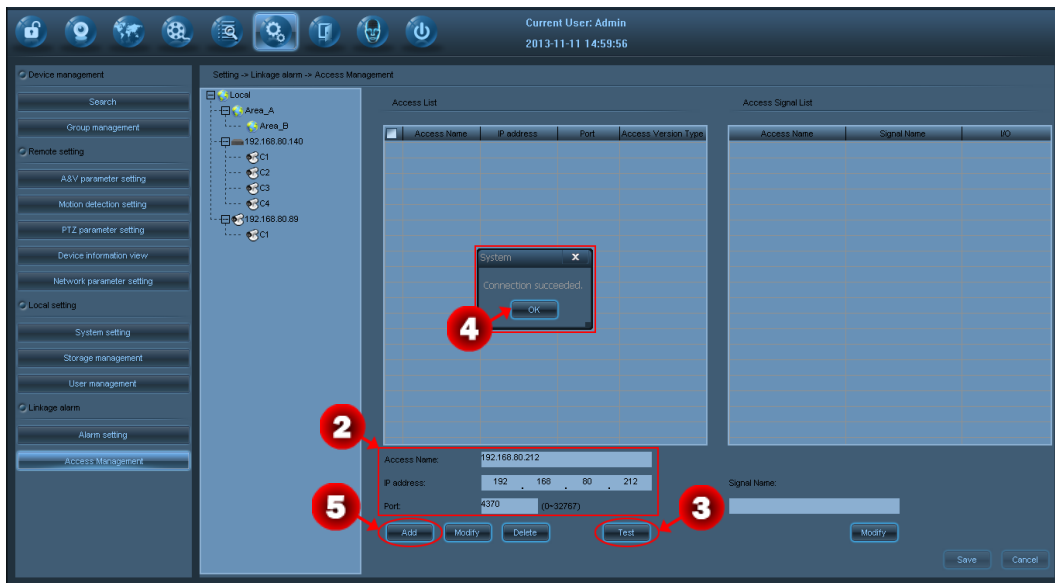
(Note: That this operation is required only when the suite contains an access control device.)



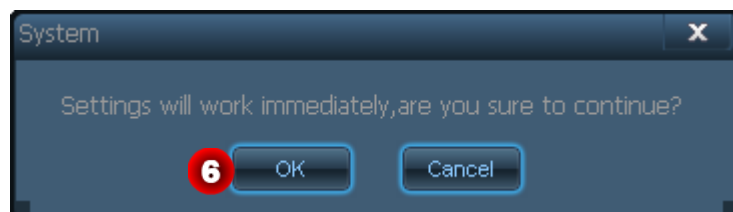
1. Click the **Access Control Function** icon to access the **Access Management** window (The following takes F7 as an example.).



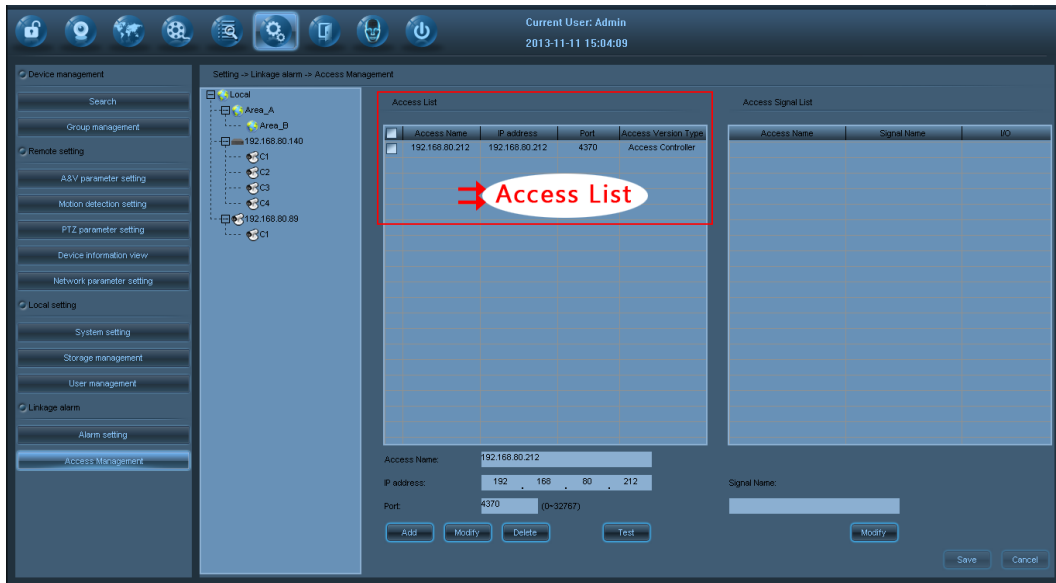
- Input the Access Name, IP address, and Port No. in the **Access Name**, **IP address**, and **Port** text boxes respectively. After that, click the **Test** button. If the device connection is successful, the **Connection succeeded** prompt will display, as shown in the following figure.



- Click **OK** to close the prompt and then click **Add**. A prompt as shown in the following figure will display.



- Click **OK** to confirm and add the access device. After the device is successfully added, relevant information about it will display in the **Access List** area, as shown in the following figure.



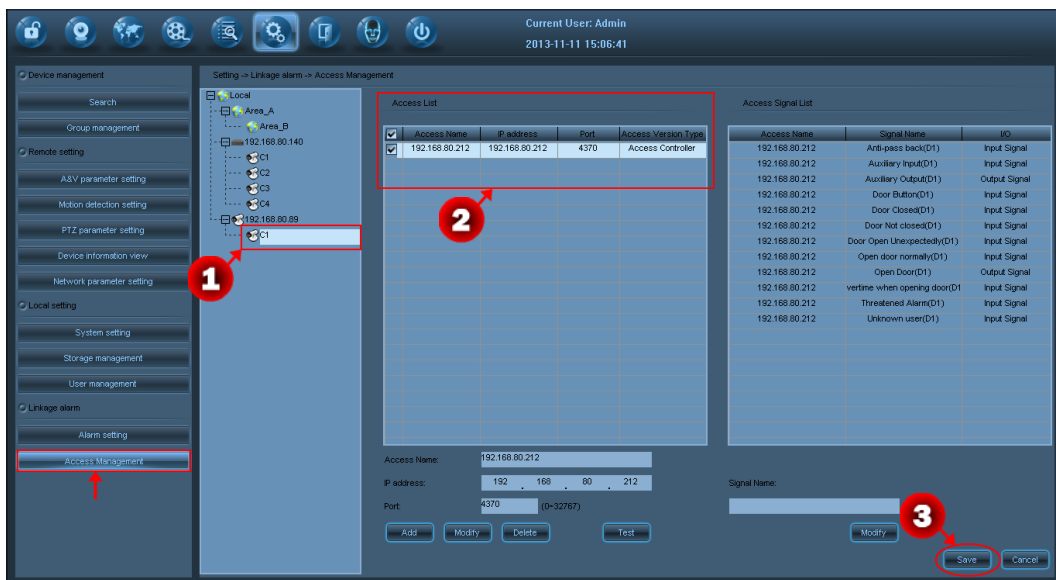
2.2.2 Setting for Linkage between Access Control and Video

(Note: That this operation is required only when the suite contains an access control device.)

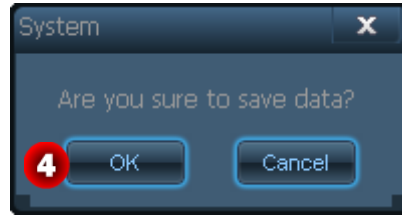
You can set alarm linkage for the video device and access device to implement linkage between access control and video. The detailed operation procedure is as follows:

2.2.2.1 Alarm Linkage Setting

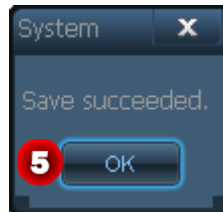
1. In the **Access Management** window, double-click the camera in the **Video Device List**.
2. In the **Access List**, select the access device requiring alarm linkage, as shown in the following figure.



3. Click **Save**. A prompt as shown in the following figure will display.

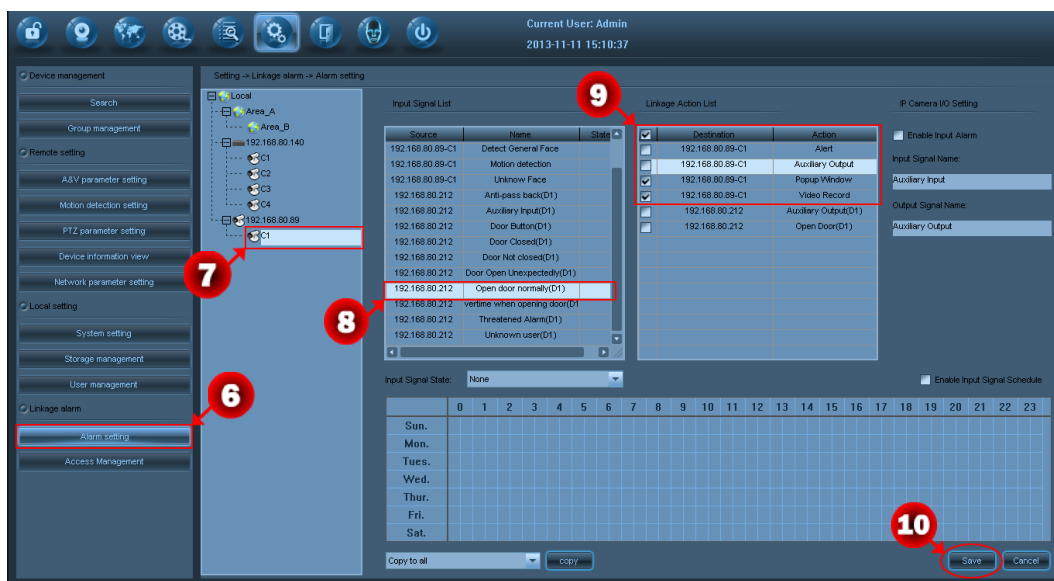


- Click **OK** to confirm and save the current data. A prompt as shown in the following figure will display after the data is successfully saved. (You can click **OK** to close the prompt.)

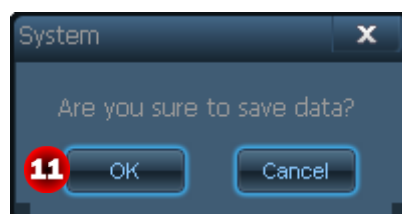


- Click  to access the **Alarm Setting** window.

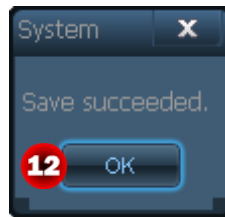
- Double-click the camera in the **Video Device List**, click to select an alarm input signal in the **Input Signal List** area (take **Open door normally** as an example), and click to select linkage actions in the **Linkage Action List** area, as shown in the following figure.



- Click **Save**. A prompt as shown in the following figure will display.



- Click **OK** to confirm and save the current data. A prompt as shown in the following figure will display after the data is successfully saved.

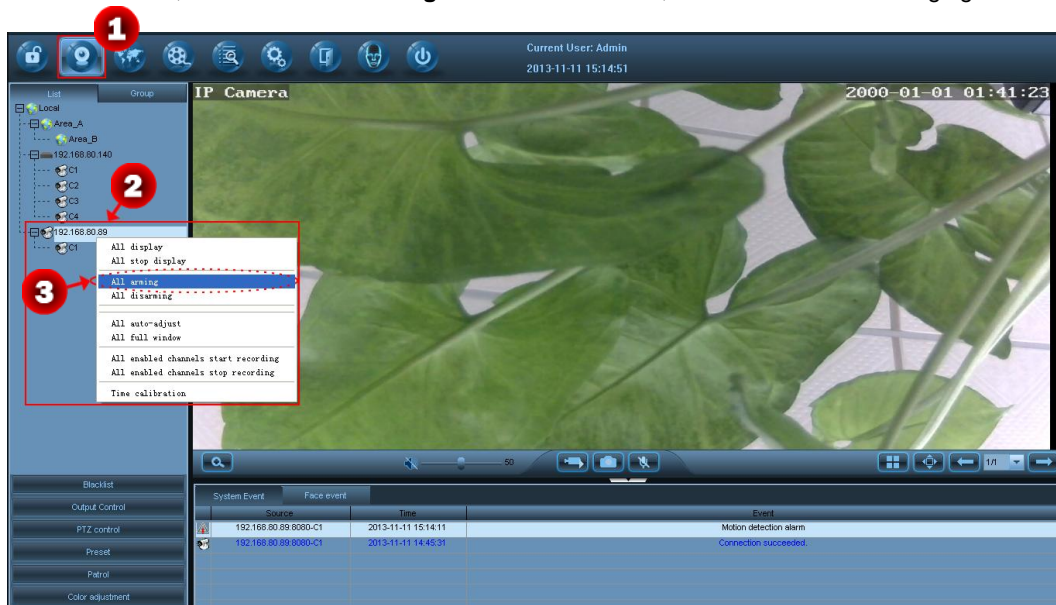


- Click **OK** to close the prompt.

2.2.2.2 Camera Arming Setting




- Click the **Preview** icon to access the **Preview** window.
- Right-click the camera, and choose **All arming** in the shortcut menu, as shown in the following figure.



2.2.2.3 Viewing the Effects of the Linkage between Access Control and Video

When a user opens door normally by using fingerprint on the access device (F7), a linkage alarm popup window will show and it will start video recording accordingly:



Note: Users can click the **Events Search** icon  and then the **Access Event** button to view the video recording. For detailed operations, refer to the bundled optical disk **ZKVision Client Software User Manual**.

