

G4

Multi-Biometric Attendance & Access Control Terminal with Enhanced Visible Light Facial Recognition



G4 is a multi-biometric identification terminal which features ZKTeco's innovative Enhanced Visible Light Facial Recognition and SilkID fingerprint sensor technology. The device with latest technologies can perform recognition in a distance from 0.5m to 3m and will function automatically when face are detected so as to deliver higher recognition quality in terms of speed and accuracy than the previous near IR facial recognition. With the applied Deep Learning algorithm, pose angle tolerance and anti-spoof function have been greatly enhanced against dynamic environment and various spoofing attacks. Also with the world's cutting-edge 3D Neuron Fingerprint Algorithm, it precisely authenticates dry, wet, or rough fingerprints efficiently and accurately.

Features



Revolutionary SilkID FingerPrint Sensor



Proactive Facial Recognition



Wide Pose Angle Acceptance



Enhanced Visible Light Facial Recognition



New Height of Anti-Spoofing



Touchless for Better Hygiene



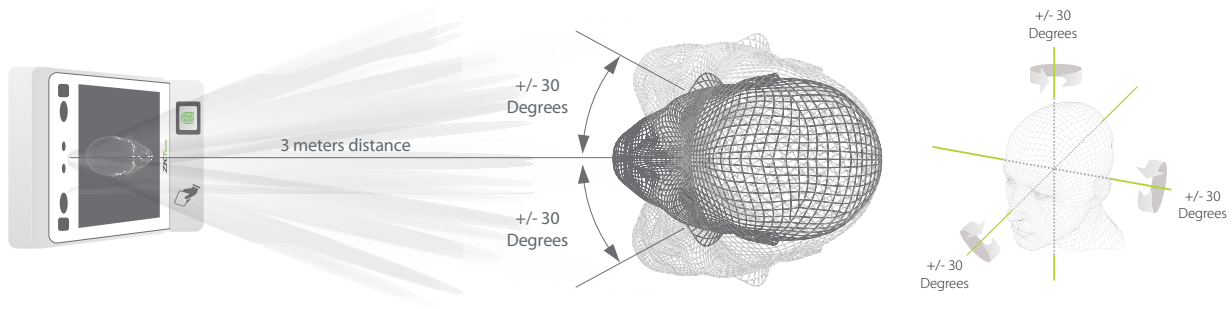
Multiple Verifications: Face/FingerPrint/Card/Password



Speedy Recognition

Recognition distance up to 3m long and extra wide angle recognition

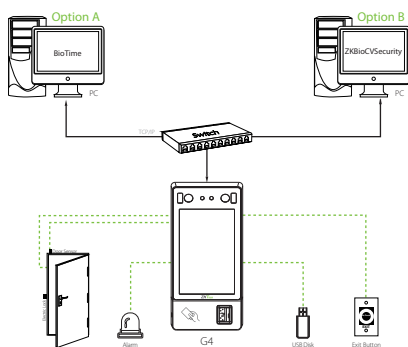
The recognition distance has been greatly extended up to 3 meters long, which significantly improves maximum traffic rate. While most of algorithms only support 15-degree angle facial recognition, ZKBioFace supports 30-degree angle facial recognition.



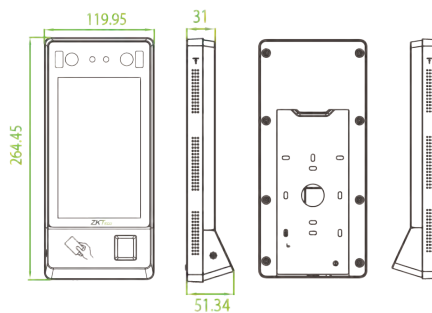
Specifications : GL Premium Feature

Capacity Users 10,000 Face Template 10,000 Fingerprints 10,000 ID Cards 10,000 Transactions 1,000,000	Hardware High Performance Android Industrial CPU 2GB DDR3 RAM 16GB ROM SilkID FingerPrint Sensor 7-inches Touch Screen, 1280*800 Pixel 2NP Binocular Camera	Compatibility BioTime ZKBio CVsecurity (Time Attendance)
Communication TCP/IP USB Host Wiegand Input Wiegand Output	Standard Functions ID Card / Work Code / ADMS DST / Schedule Bell / Automatic Status Switch Record Query / Photo ID Optional Functions: 13.56MHz IC Card	Additional Info Algorithms ZKFace V10.0 & ZKFinger V12.0 Working Temperature 0°C~+50°C Working Humidity <90% Dimensions 264*120*51mm Facial Recognition Speed ≤1s Facial Recognition Distance 0.5m~3m Power DC12V 3A
Access Control Interface Lock Relay Output Exit Button Alarm Output Door Sensor External Bell	Special Functions Enhanced Visible Light Facial Recognition Liveness Face Detection Multiple Biometric Verification Modes	

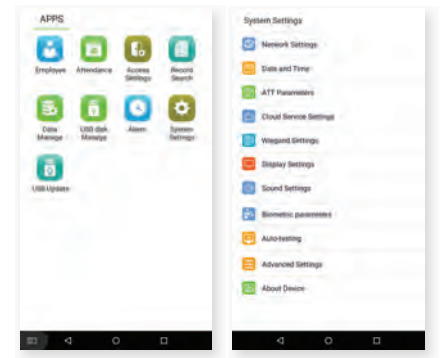
Configuration



Dimensions (mm)



User Interface



V1.0 11/01/2022



ZKTECO MIDDLE EAST

www.zkteco.me E-mail: zk_me@zkteco.com



Copyright © 2022 ZKTECO CO., LTD. All rights reserved.