

BioPro SA30

Fingerprint time attendance and access control terminal



BioPro SA30 is the first time attendance and access control terminal applying the most advanced SilkID technology. It not only possesses outstandingly high identification rate towards dry, wet and rough finger, but also provides the utmost security by its live finger detecting capability as well as photo taking function which enables attendance photo and Photo ID(optional).

In addition, with the brand new ZMM220 hardware platform, its clock rate can attain 1.2GHZ. Such speedy hardware platform and fingerprint algorithm greatly enhance the speed of fingerprint verification.

Features

- 2.4-inch TFT color screen
- SilkID fingerprint reader with living object detecting function
- Multiple Verification Modes: Multi-verification methods (card is optional) providing user various choices
- Full Access Control Features: Anti-passback, access control interface for 3rd party electric lock, door sensor, exit button, alarm and doorbell
- Camera Function: record photo, photo ID (optional)
- Built-in auxiliary input with enhanced flexibility to link with wired detector or emergency switch

Specifications

| | |
|--------------------------|--|
| Display | 2.4-inch TFT LCD Color Screen |
| Fingerprint Capacity | 3,000 |
| Card Capacity | 5,000 (Optional) |
| Transaction Capacity | 100,000 |
| Sensor | SilkID Sensor |
| Algorithm Version | ZKFinger VX10.0 |
| Communication | RS232/485, TCP/IP, USB-host |
| Access Control Interface | 3rd Party Electric Lock, Door Sensor, Exit Button, Alarm, Doorbell |
| Wiegand Signal | Input, Output, SRB |
| Aux. Input | 1ea for linkage function |
| Standard Functions | DST, Automatic Status Switch, Anti-passback, Scheduled-Bell, ADMS |
| Optional Functions | ID/Mifare, RS485 (for slave reader), Printer |
| Power Supply | 12V DC,3A |
| Operating Temperature | 0 °C- 45 °C |
| Operating Humidity | 20%-80% |

Optional Accessories



RFID Reader



Exit Button



Electric Lock

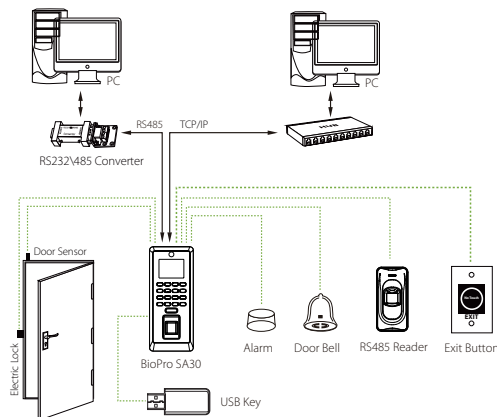


Alarm

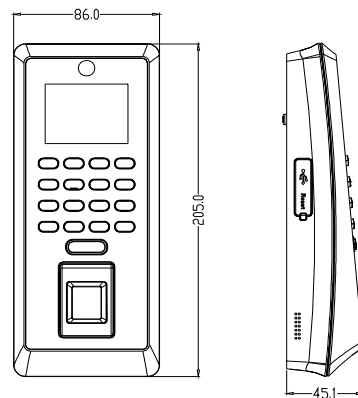


Sensor

Configuration



Dimensions (mm)



ZKTeco Middle East
 E-mail: zk_me@zkteco.com
www.zkteco.me

© Copyright 2016 ZKTeco Co. Ltd. ZKTeco Logo is a registered trademark of ZKTeco or a related company. All other product and company names mentioned are used for identification purposes only and may be the trademarks of their respective owners. All specifications are subject to change without notice. All rights reserved.