

X7

X7, one of innovative biometric fingerprint reader for access control applications. Offering unparalleled performance using an advanced algorithm for reliability, precision and excellent matching speed. It can operate on standalone mode with the interface for third party electric lock, alarm, door sensor, exit button and doorbell. Keypad operation is easy and convenient, such as, enrolling user, deleting user and accessing control parameter settings etc.



Specifications

Card Capacity

500

Fingerprint Capacity

500

Operating Temperature

0°C ~ 40°C

Sensor

ZK Optical sensor

Size

Long: 88.10mm

Height: 34.69mm

Width: 88.10mm

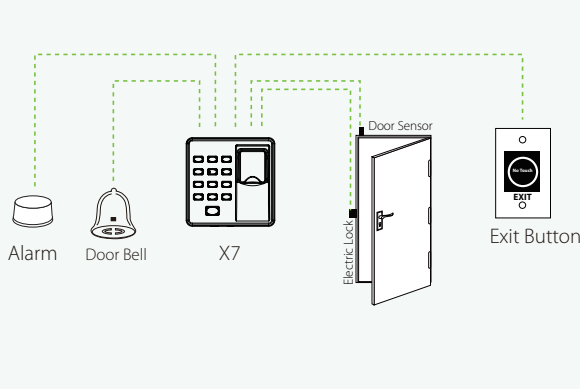
Algorithm Version

ZK Finger v10.0

Access Control Interface for

3rd party electric lock, alarm, door sensor, exit button and doorbell

Configuration



Dimensions (mm)

