



# iClock S900-JC

## Fingerprint T&A Terminal with Job Costing Firmware

iClock S900 JC is a Time & Attendance and access control terminal with incorporated ZK fingerprint sensor and 3.5 TFT display.

Easy to install, and with a modern design, it includes ZKTeco's Job Costing firmware. Job Costing, or Production Control, is a solution for the management of projects and tasks performed by employees inside the company, tracking the time and associated costs of each job. The multi-lingual application, is compatible with Windows. The system allows the user to identify by means of pin, proximity, fingerprint or barcode. Apart from project cost management, it includes basic T&A functions, such as check-in & check-out.

- Job Costing Firmware Version for Production Control
- Project, Task and Job Management
- Barcode structure definition
- Units manufactured by Job number or project
- Pendrive download structure defined by user
- Multiverification by user
- Function keys definition by weekday and time range
- Access Control functions

### Standard Functions

Time & Attendance	Access Control	Fingerprint	Job Costing Firmware	Multilanguage	ZEM800	Webserver
Linux	Ethernet	3,5" TFT	Voices	Wiegand In/Out	RS-232/RS-485	SDK
USB Client	USB Host	Relay	Exit Button	Doorlock		

### Optional Functions

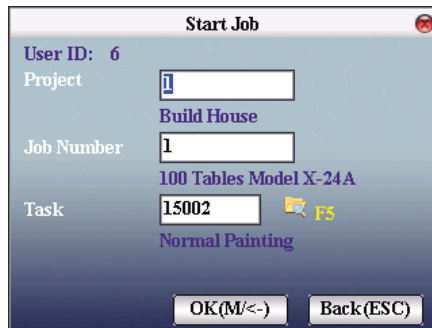
EM RFID	MF RFID	HID RFID	Printer
Customized Firmware	Wifi	GPRS	Bell
Barcode			

# Specifications

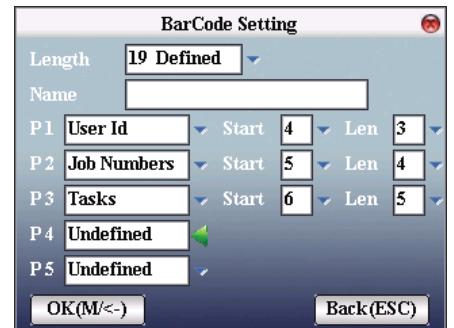
<b>Fingerprint Capacity</b>	8.000	<b>Fingerprint Algorithm</b>	ZK Finger 9.0 and 10.0
<b>Record Capacity</b>	200.000	<b>Verification Speed</b>	≤1 sec
<b>Display</b>	3.5-inch Screen	<b>Function Keys</b>	8 defined by user
<b>Communication</b>	RS-232/485, TCP/IP, USB Client/Host	<b>Languages</b>	Most used European languages
<b>Optional</b>	EM RFID, MF RFID, Wi-Fi, GPRS	<b>Voices</b>	Male and female
<b>Power Supply</b>	DC 12V 1.5A	<b>SDK</b>	Professional SDK
<b>Operating Temp.</b>	0°C- 45°C	<b>Dimension</b>	140x160x45mm (LxWxT)
<b>Operating Humidity</b>	20%-80%	<b>Gross Weight</b>	1.50 kg



Function keys definition



Start Job



Barcode Setting

# Data Processing

The system allows the users identification by PIN, proximity card, fingerprint and barcode. Different lengths can be set in the barcodes to associate with employees, job numbers and tasks.

The system can be completed with **Job Costing Software** for Windows OS..

