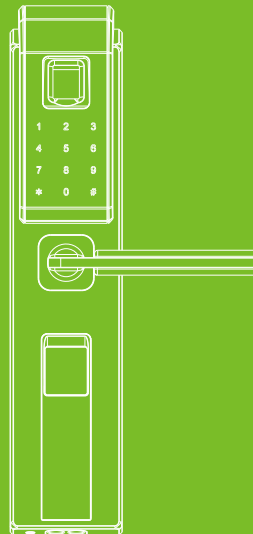


Installation Instruction

Z1

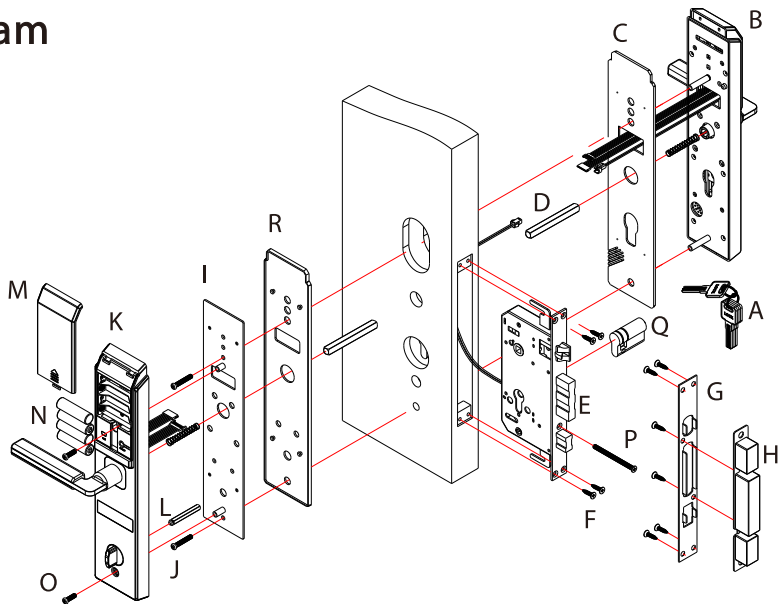
Version: 1.0

Date: Oct., 2017

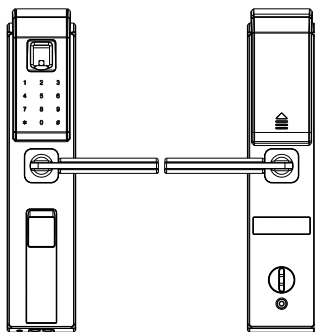


Before Installation

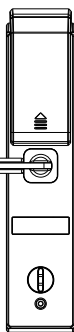
Diagram



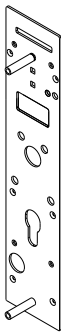
Packing List



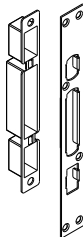
B



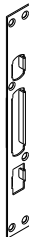
K



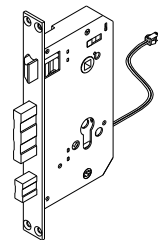
I



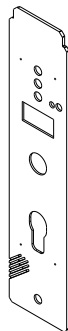
H



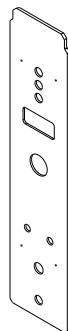
G



E



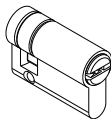
C



R



A

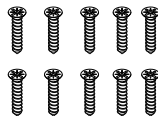


R



65mm

P



20mm

Wooden Door

Security Door



10mm

F

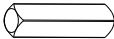
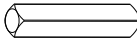


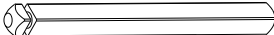
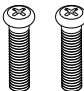
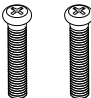
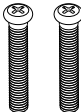
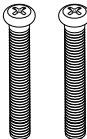


10mm

O

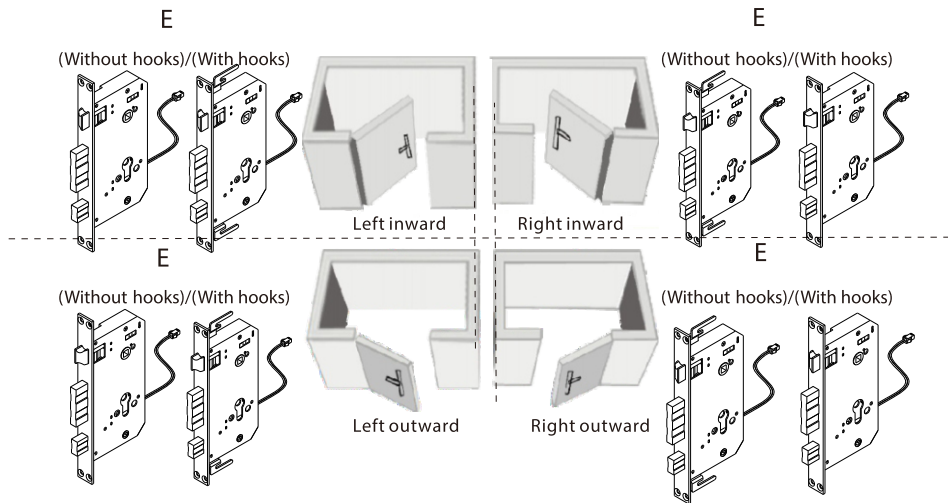
Door Preparation

1. Check door thickness, prepare the proper screws and spindles.

Door Thickness	45-50	50-60	60-65	65-75	75-85	85-100
D Spindle	 35mm			 45mm		 55mm
L Spindle	 50mm		 75mm			
J Screw	 45mm		 60mm		 70mm	 80mm

Note: The standard package includes 45-50 mm screw and spindle, please select appropriate material according to the door thickness.

2. Check door open direction.



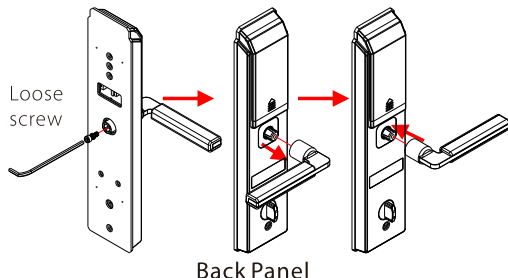
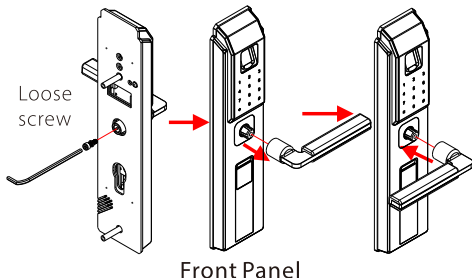
Note : 1. Mortise (E) can be applied to inward or outward directions by adjusting the direction of latch bolt. Please refer to Tips for further details.

2. There are 2 types of mortise (E): one is for left open, the other is for right open. Please use the correct one.

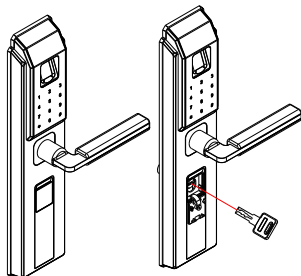
3. Lock without hooks is applied to wooden door, and lock with hooks is applied to security door.

Tips

1. How to change the handle direction?



2. How to use mechanical key?

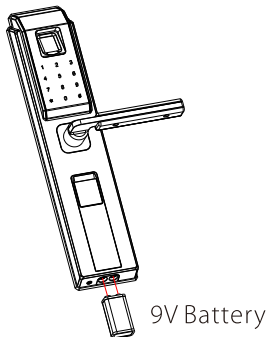


Remove the cover. Insert the key into key hole and rotate 90°.

Mechanical Key Instruction:

1. Key A is coated with brass color, which is used only for lock installer and upfitter.
2. Key B is packed in the sealed plastic wrap for safety, which is used for house owner.
3. Once Key B is used, Key A will be disabled to open the lock.

3. How to use emergency power?

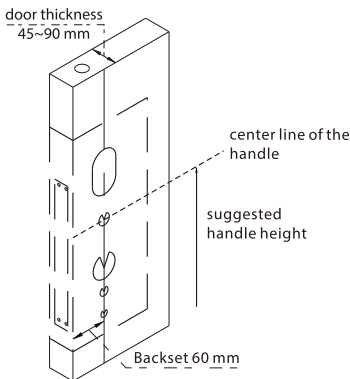


Cautions

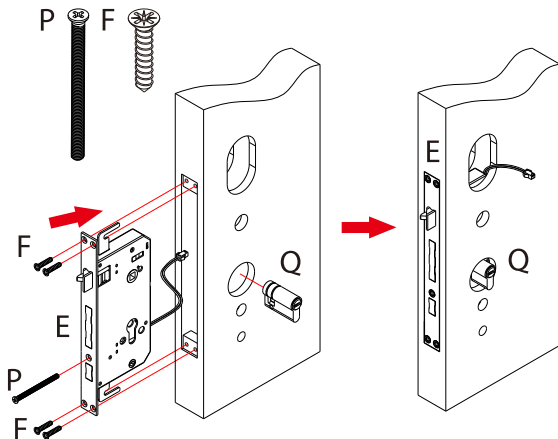
1. New lock cannot unlock with ANY verification.
2. Please register administrator firstly to prevent any illegal access.
3. The lock is equipped with mechanical keys for manual unlocking. Remove mechanical keys from the package and keep them in a safe place.
4. To power on the lock, four alkaline AA batteries (not included) are required. Non-alkaline and rechargeable batteries ARE NOT RECOMMENDED.
5. Do not remove batteries when the lock is in working state.
6. The operation of setting lock has a stand-by time limit of 10 seconds. Without any activity, lock will shut off automatically.
7. Keep your fingers clean when using this lock.

Installation

1. Drill holes on the door



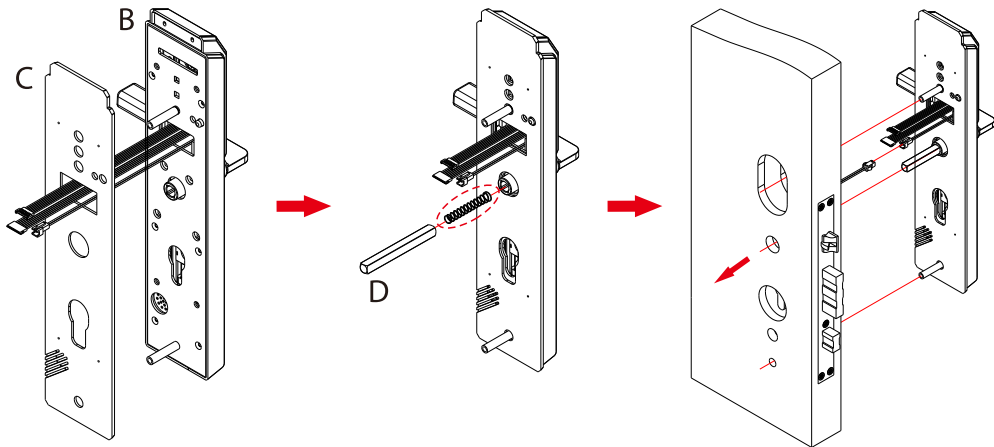
2. Install the mortise (E)



Note 1: Align the template along the vertical center line of the mortise (F) at the suggested handle height, and tape it to door.

Note 2: Mark the holes first, then start drilling.

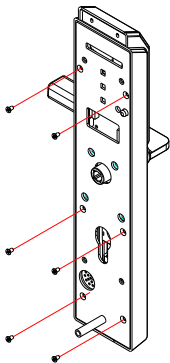
3. Install spindle (D), outdoor unit (B) with gasket (C)



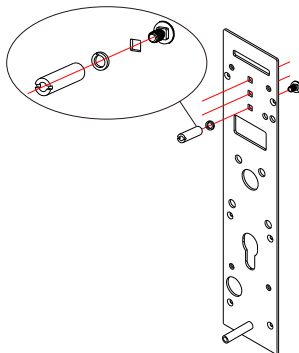
Note: Please install the spring before installing the spindle!

How to change the location of stud bolts?

Note: Before install the waterproof gasket, if the height of stud bolts is unsuitable for the existed holes, you can adjust stud bolts location to make the lock suitable.

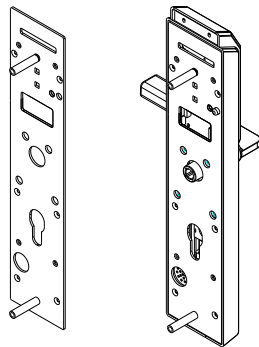


Step1. Twist down the 6 M3 screws to take down the mounting plate.



Step2. Remove the adjustable stud as show in the figure to adjust the mounting position.

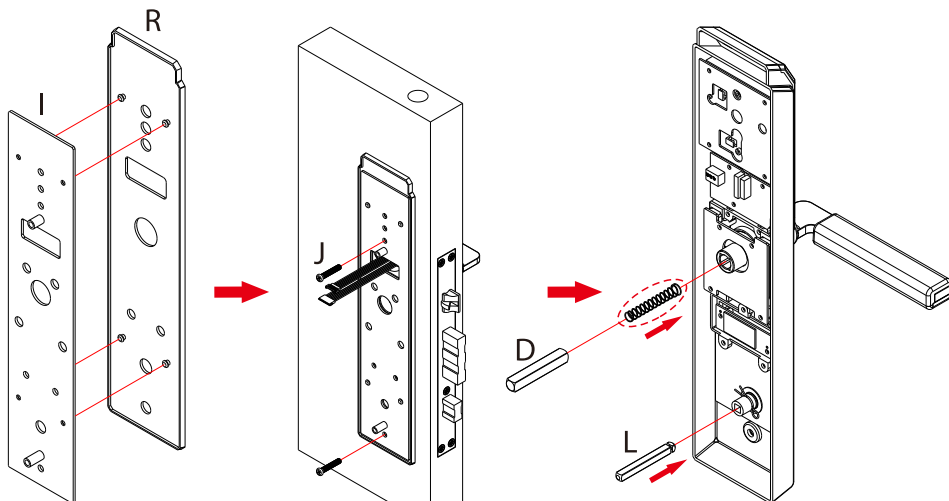
Note: There are three square holes each separated by 15mm to be used.



Step3. Fix the stud bolts according to the required mounting position and re-install the removed 6 M3 screws.

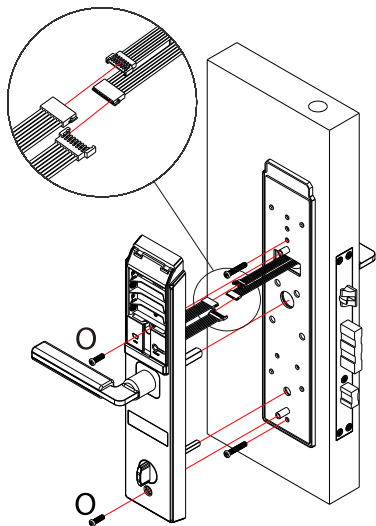
Note: Adjust the installation position of the studs under the authority of the dealer, so as not to affect your warranty interests!

4. Install mounting plate (R) with gasket (I) and spindle (L) on the door

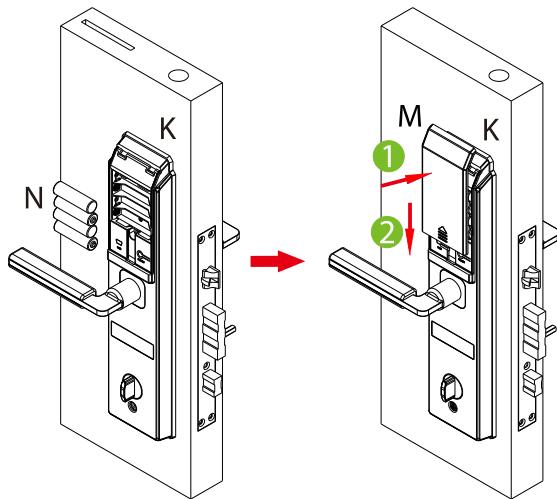


1. Please install the spring before installing the spindle!
2. Make sure spring can withstand the front handle spindle before installation.
3. Insert 5*5 spindle L.

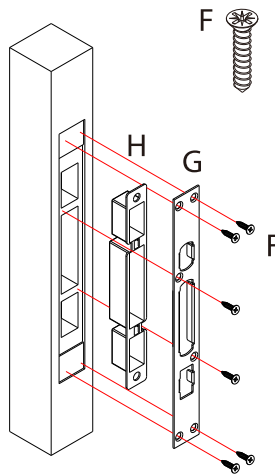
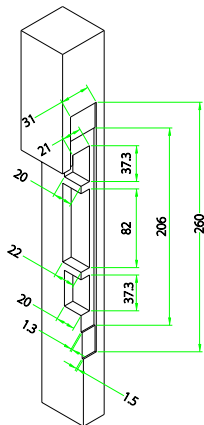
5. Install indoor unit (K)



6. Install the battery (N)



7. Mark and drill holes for strike



8. Test the lock by mechanical key (A) or registered fingerprint, card, password